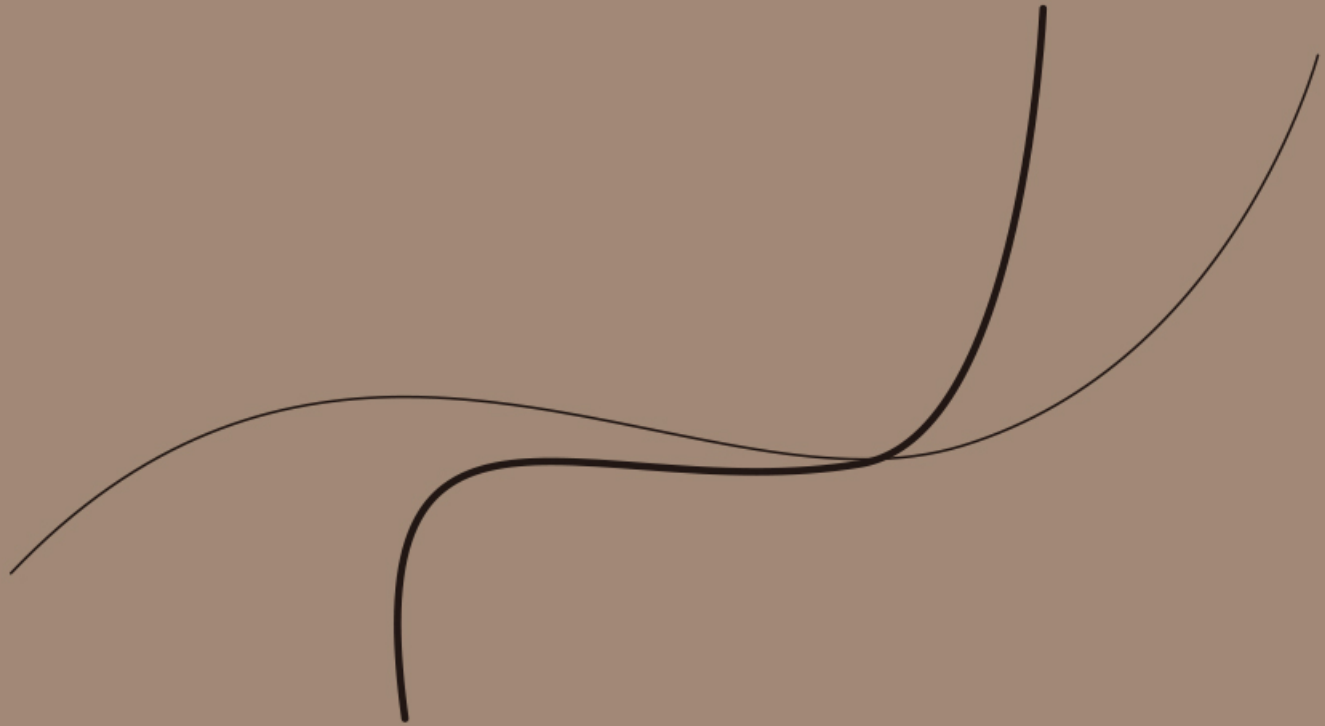


 **KELVIN GIORMANI**



Fashionable Custom-sofa Crafter

KELVIN GIORMANI



Growth
in Spring
Relax
with Motion

ABILE 08

RETTO 18

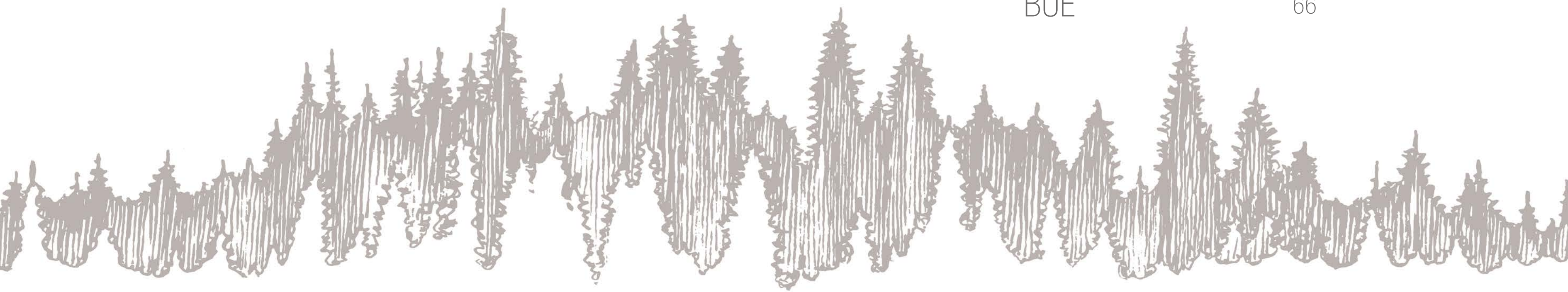
FIERO 28

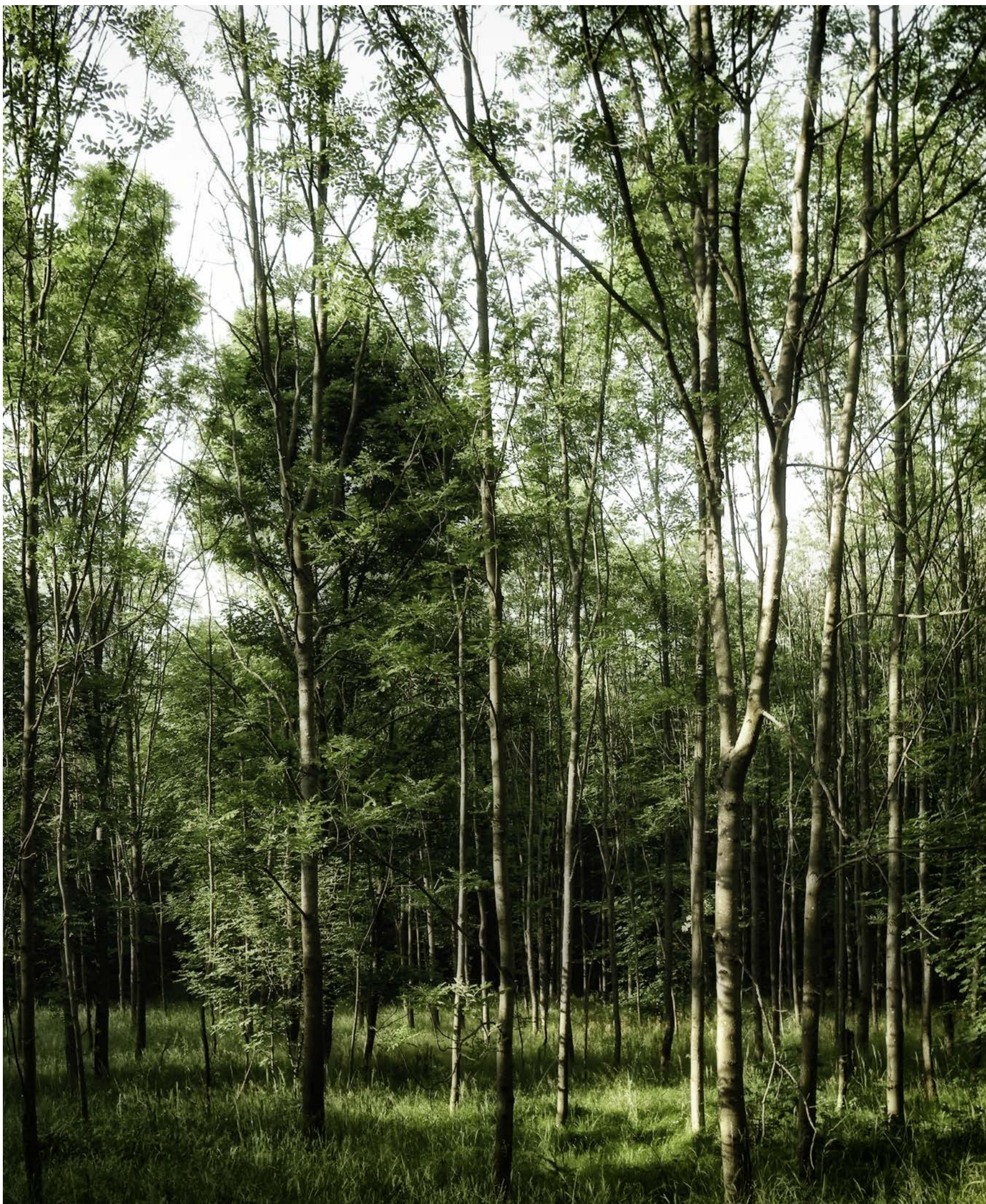
CONCETTO 38

ESIBIRE 48

TUTTI 58

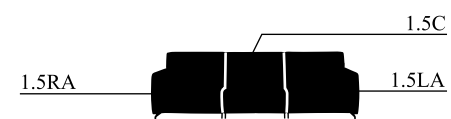
BUE 66





Spring **brings** forth all **creatures**

Sitting on the sofa brings you relaxation
and peace of mind.



Leather: 9409-1.5RA+1.5C+1.5LA (subject to availability)

ABILE II 0650BM1





ABILE

Model ABILE comes with a brand-new seat mechanism for KELVIN GIORMANI which can achieve a thin-look for the seat of a motion sofa.

ABILE’s thin seats enhance the expression of its leg design that delivers the flair of high-leg contemporary style sofas.

ABILE also comes with an ultra-thin arm (10cm) design that well matches the medium-high back characteristic of the new back mechanism. With the thin-arm feature, ABILE’s switch-control is fixed at the inner side of the seat cushion (hidden) as opposed to the interior-side of the sofa arm.

The metal-accent detail is embedded in the sofa arm in order to create a European style luxury-sofa look.

The plastic and transparent leg protector on the sofa leg prevents the thin metal leg from damaging floorings.



ABILE

ABILE I (model number O650APM1) is the leather & fabric mix-and-match edition of Model ABILE I. This special edition rides on the latest European market trend of incorporating fabric elements into luxury leather sofas.



ABILE I (model number O650AM1) is the original version of the Model ABILE, which expresses the minimalistic beauty of the model.

ABILE II (model number O650BM1) is the detail-added version of Model ABILE. The square-shaped leather-wrap button creates a tufting effect on the back cushion.





ABILE

This exceptional metal-accent detail is even placed at the side of the sofa back frame which well corresponds to the sofa arm design. This idea upgrades the luxury level of a motion sofa.

Both metal-accent decorative pieces are made with stainless-steel which is the same material as of the metal leg. All of them can be in the same color, and there are 5 different colors as the choice for customization.



ABILE comes with a brand-new head mechanism for KELVIN GIORMANI. Its upward and forward motion enhances the head-forwarding angle for better TV viewing while the seat is fully reclined.



Morning **enlightens** people's **hope**

Having a good rest on the sofa gives you
freshness that feels like a morning start.



Fabric: 96/6301/A-410
Leather: 7017-3D (subject to availability)

RETTO I 0651APM1



RETTO

RETTO II (model number 0651BM1) is the detail-added version of Model RETTO. The square-shaped leather-wrap button creates a tufting effect on the back cushion.



Model RETTO is the wider-arm version of Model ABILE. With the arm-width of 15cm, RETTO's control switch can be fixed at the interior-side of the sofa arm where it is typically placed.



RETTO I (model number 0651APM1) is the leather & fabric mix-and-match edition of Model RETTO I. This special edition rides on the latest European market trend of incorporating fabric elements into luxury leather sofas.



RETTO I (model number 0651AM1) is the original version of the Model RETTO, which expresses the minimalistic beauty of the model.



RETTO

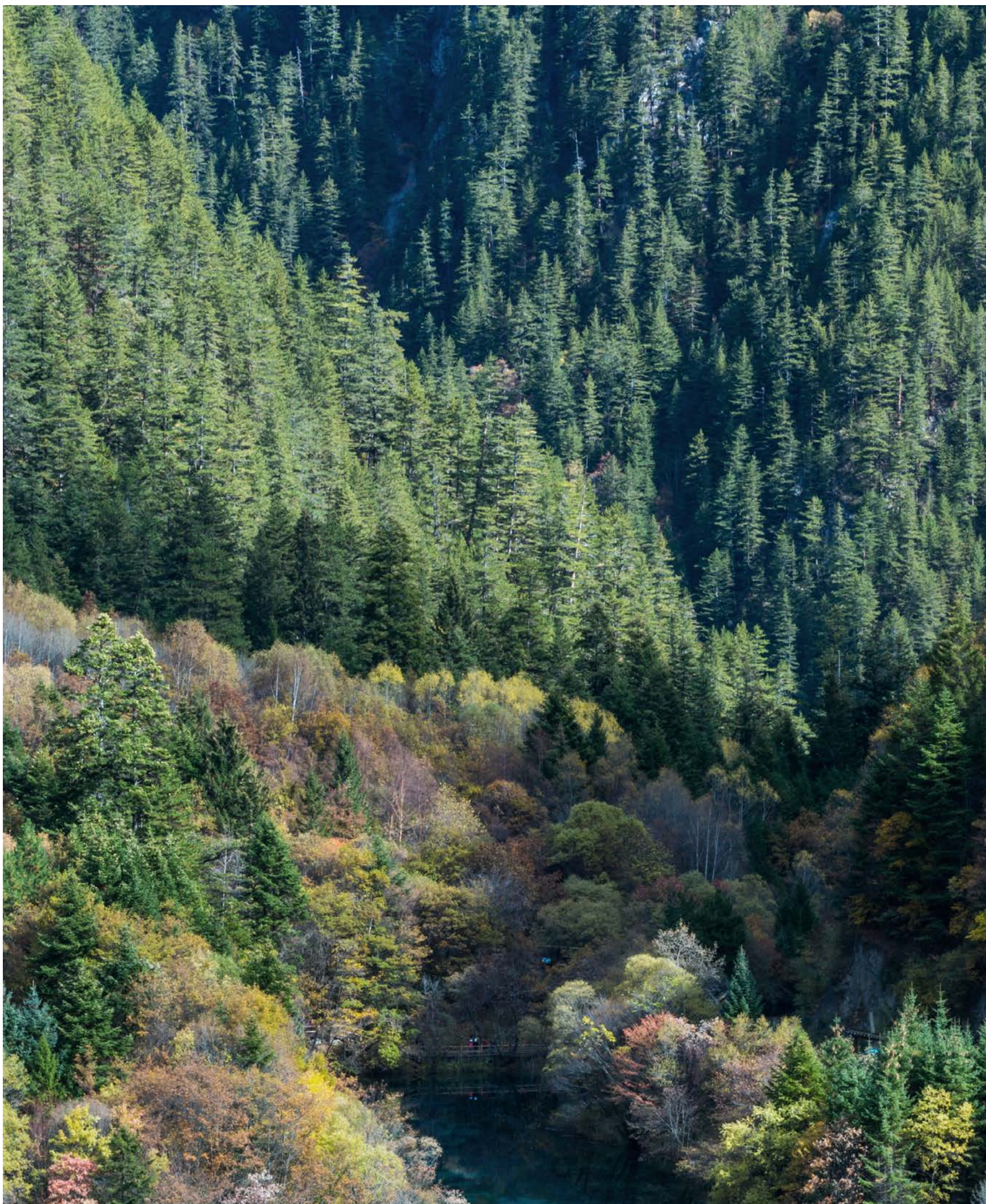


RETTO

Model RETTO is decorated by a splendid metal-accent piece which is placed at the sofa arm exterior-side. It is also a perfect extension of the stainless-steel sofa leg to create a complete structure, and there are 5 different stainless-steel colors as the choice for customization.

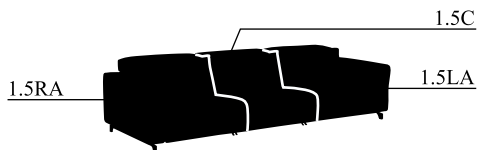
RETTO II (model number 0651BM1) is the detail-added version of Model RETTO. The square-shaped leather-wrap button creates a tufting effect on the back cushion.





Catch the **right** moment

Time to go out and ride on
the world's forwarding motion.



Leather: 7577/7570-1.5RA+1.5C+1.5LA (subject to availability)

FIERO II 0657BM1



FIERO

FIERO I (model number 0657AM1) is the original version of the Model FIERO, which expresses the minimalistic beauty of the model.



FIERO I (model number 0657APM1) is the leather & fabric mix-and-match edition of Model FIERO I. This special edition rides on the latest European market trend of incorporating fabric elements into luxury leather sofas.

FIERO II (model number 0657BM1) is the detail-added version of Model FIERO. The easy-looking leather edging of the back cushion well corresponds to the contrast-color leather edging at the sofa arm.



In terms of the motion mechanisms, FIERO uses the same ones for ESTENDE and TENERO, which are the most popular mechanisms among all KELVIN GIORMANI motion sofa models. All of them are empowered by Motion Italia SpA.



FIERO



FIERO

The ruffled detailing at the edges of both the sofa arm and back cushion creates a natural and easy look that well matches the relaxation theme of motion sofas. It becomes FIERO's main design characteristic, which was inspired by the leaf-edging feature of Model SNELLO (2013), an award-winning KELVIN GIORMANI design.

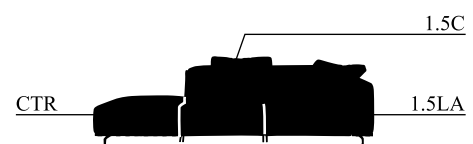
The slightly outward-twisted design of FIERO's arm is an out-of-the-ordinary idea from the designer to hopefully give this timeless design piece something "one-of-a-kind" to be remembered.





Autumn breeze **eases** your body and mind

Sleep on the sofa and dream a little dream
Let's take a nap on a Fall Sunday.



Fabric: JR1157-25/3/JR1157-25/1
Leather: 9423-CTR+1.5C+1.5LA (subject to availability)

CONCETTO II 0658BM1





CONCETTO



CONCETTO

Model CONCETTO is meant to have an easy-to-appreciate design. The leather-piping trims of the sofa arm is a timeless element that highlights the sofa arm profile as well as adding the possibility of the customized contrast-color piping feature.

This CONCETTO II (model number 0658BM1) composition exceptionally features an open-ending element (item number CTR) as opposed to a conventional one-arm seater at the end. This composition is meant for any young couple who seeks a creative look for a motion sofa set which can normally seat two persons and occasionally accommodate 2-3 more visitors with the openness concept of the combo. "There's nothing wrong to look different, right ?!"

Unlike the standard leather & fabric mix-and-match edition, CONCETTO II (model number 0658BM1) is more than just changing the original genuine leather back cushion to the fabric one. Each fabric back cushion is accompanied by an extra-large fabric pillow in order to create a multi-cushions (all in fabrics), easy-and-comfort feeling for CONCETTO; therefore, the designer recommends that the cushions shall be placed arbitrarily to achieve this feeling.



For those who prefer seeing things that are in-place orderly, the extra-large fabric pillows can always be placed in a conceivable manner.

In order to ensure sufficient seat-depth while the multi-cushion feature is in presence, the back cushion of CONCETTO II is about 2cm thinner than that of the original version (CONCETTO I).

CONCETTO I (model number 0658AM1) is the original version of the Model CONCETTO, which expresses the minimalistic beauty of the model.





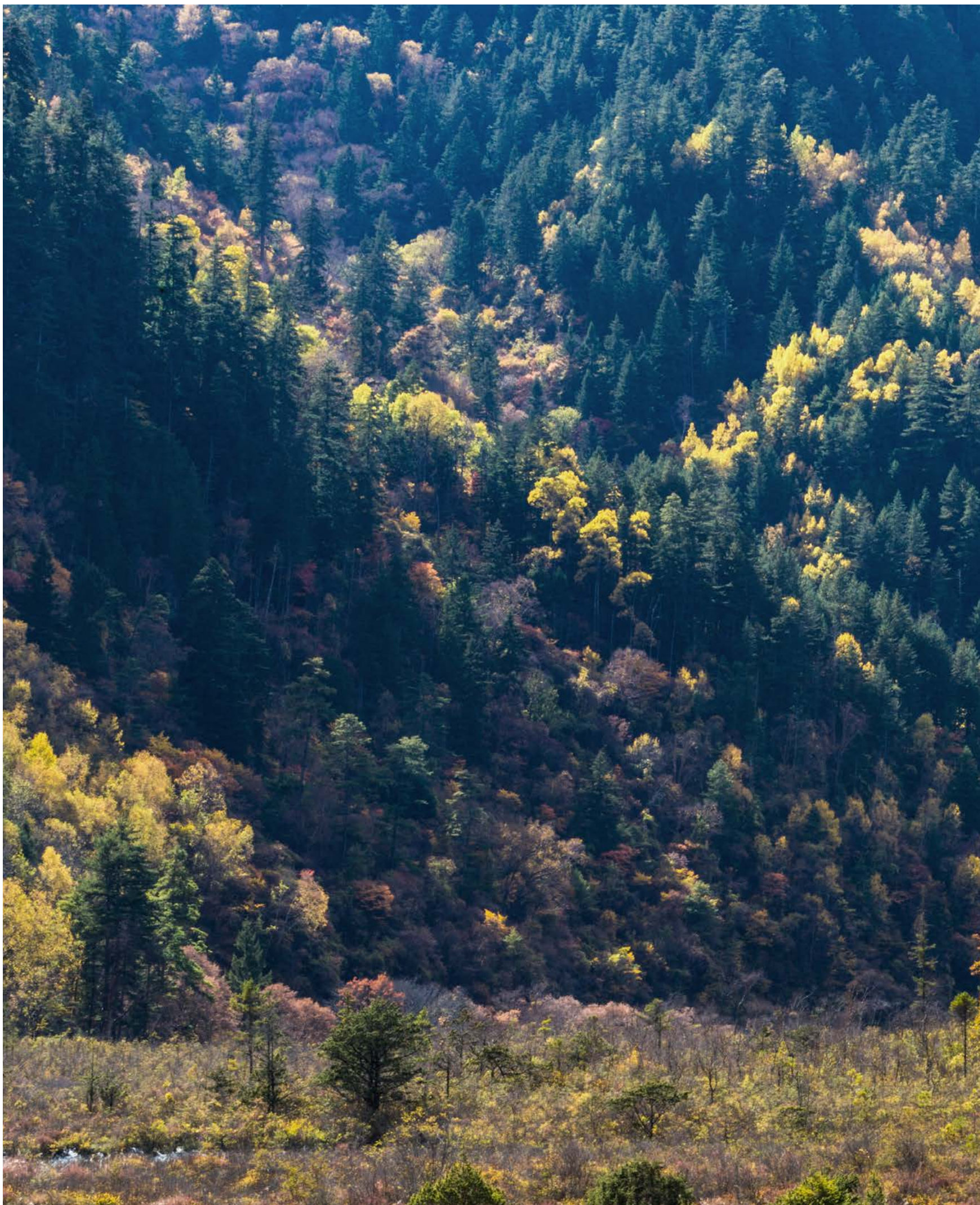
CONCETTO



Straps of leather-wrap alternately present on the stainless steel decorative trim at the sofa frame base. This is Model CONCETTO's main design characteristic which was inspired by Model FERLA, a 2010 KELVIN GIORMANI design, that was named as "zebra-effect" at that time.

For the stainless-steel trim and leg, there are 5 different colors as the choice for customization.

In terms of the motion mechanisms, CONCETTO uses the same ones for ESTENDE and TENERO, which are the most popular mechanisms among all KELVIN GIORMANI motion sofa models. All of them are empowered by Motion Italia SpA.



Afternoon tea **break**

Sitting on the sofa with your feet up
Simple jasmine tea will make your day.

4D



Leather: 3313/3319-4D (subject to availability)

ESIBIRE I 0659AM1







ESIBIRE I (model number 0659APM1) is the leather & fabric mix-and-match edition of Model ESIBIRE I. This special edition rides on the latest European market trend of incorporating fabric elements into luxury sofas.



ESIBIRE has two different standard arm-widths to choose from. ESIBIRE II (model number 0660AM1) has the narrower arm (15cm).



ESIBIRE I (model number 0659AM1) is the original version of the Model ESIBIRE, which expresses the minimalistic beauty of the model. ESIBIRE has two different standard arm-widths to choose from. ESIBIRE I has the wider arm (23cm).



ESIBIRE II (model number 0660APM1) is the leather & fabric mix-and-match edition of Model ESIBIRE II. This special edition rides on the latest European market trend of incorporating fabric elements into luxury leather sofas.



ESIBIRE

The design of Model ESIBIRE was inspired by fashion leather goods such as hand-bags which always consist of elements like genuine leather-belts, small and exquisite metal accent trims, etc.

For the stainless-steel trim and leg, there are 5 different colors as the choice for customization.

In terms of the motion mechanisms, ESIBIRE uses the same ones for ESTENDE and TENERO, which are the most popular mechanisms among all KELVIN GIORMANI motion sofa models. All of them are empowered by Motion Italia SpA.



Stay late for the **warmth** of sunset

Embraced by your sofa under the setting sun
Feeling satisfied after a meaningful day.



Leather: 9407-3D (subject to availability)

TUTTI I 0662AM1



TUTTI



Model TUTTI is the first KELVIN GIORMANI high-back motion sofa model which is empowered by mechanisms from Motion Italia SpA.

TUTTI's seat mechanism is the same as that of Model ABILE which is brand new for KELVIN GIORMANI that enables the seat to look relatively thin.





TUTTI

TUTTI's back mechanism is also brand new for KELVIN GIORMANI which is dedicated for high-back sofa designs. It enables the forward movement at the upper back of the sofa that enhances the head-forwarding angle for better TV viewing while the seat is fully reclined.

The zig-zag stitching feature at the sofa arm as well as the leather perforation detail that divides TUTTI's upper and lower-back demonstrate some meticulous leather workmanship which is a KELVIN GIORMANI signature element.



4NRZK



Leather: 2216-4NRZK (subject to availability)

BUE I 0663A



BUE is an Italian word
means a bull or an ox.

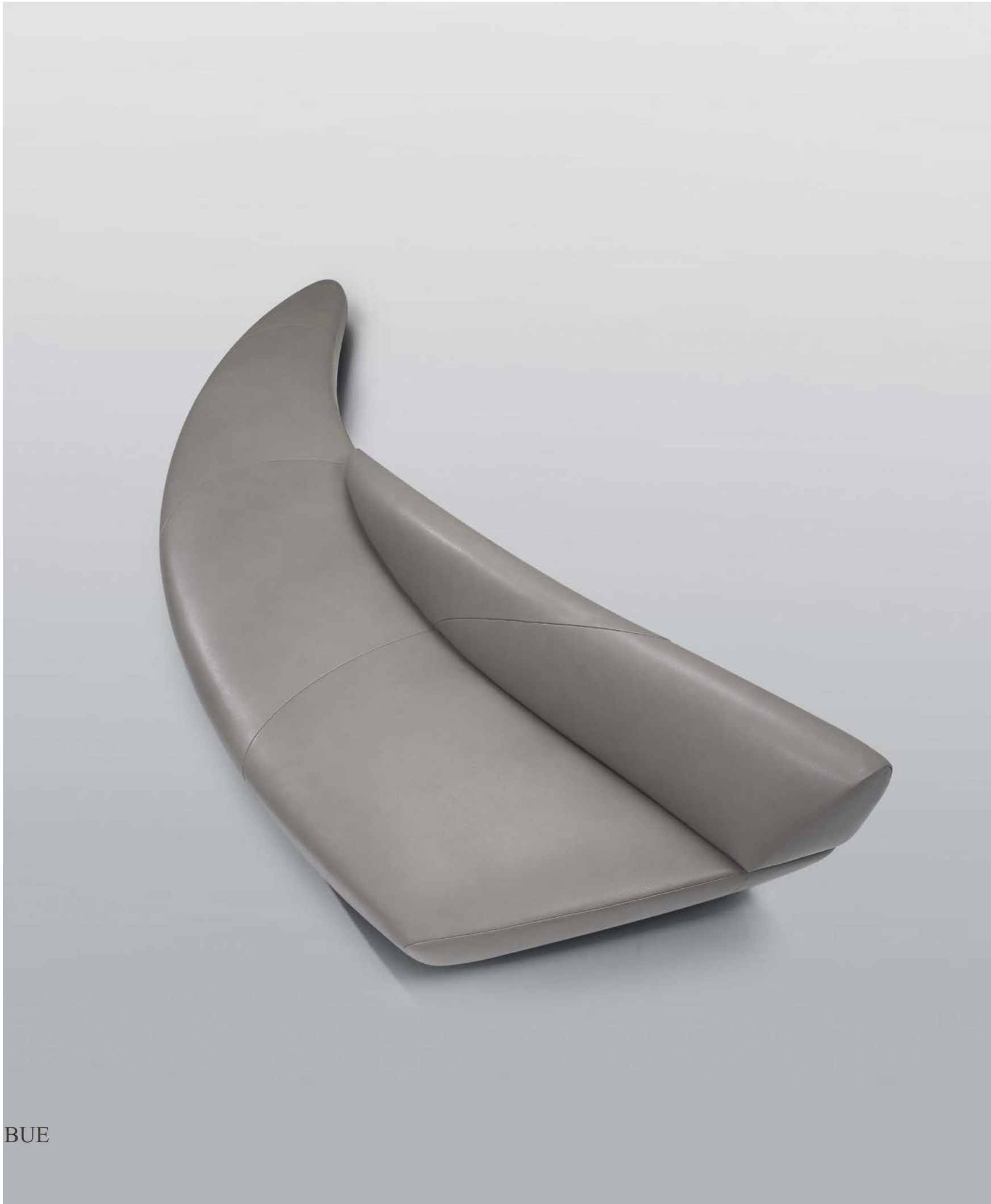
For the most part of
2021, it's the year of
the ox according to the
ancient Chinese zodiac.

The design of Model
BUE (model number
0663A) was indeed
inspired by the shapes &
forms of an ox horn.



BUE





BUE



To achieve the organic form of Model BUE as well as the structural stability, it is an engineering challenge. The framework of BUE was carefully designed that has attained a good steadiness even if someone is sitting at the very tip end of the of sofa.



Hong Kong Headquarter

Address: 6/F., Yan Hing Centre, 9-13
Wong Chuk Yeung St., Fo Tan, N.T., Hong Kong

Tel: 852 2690 3884

Fax: 852 2947 0835



China Factory

Address: Pan Shan, Da Ling Shan,
Dong Guan, Guang Dong, CHINA

Tel: 86 769 8560 4810

Fax: 86 769 8335 3409



Website

www.kelvingiormani.com



ARREDAMENTI COMPANY LTD.

KELVIN GIORMANI