

# AVANTGARDE PLUS COLLECTION

by ALEAL



**PLANUM**<sup>®</sup>  
FURNITURE

Planum, Inc  
Swedesford Corporate Center  
619 B Swedesford Road  
Frazer, PA 19355

email [info@planumfurniture.com](mailto:info@planumfurniture.com)  
visit us [planumfurniture.com](http://planumfurniture.com)

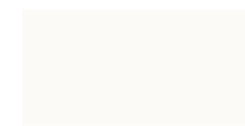
Tel : 610/251-2120  
Tel : 800/343-0042  
Fax : 610/251-2290

# ALEAL Finishes

## LACQUER FINISHES



LC01 BLACK



LC02 WHITE



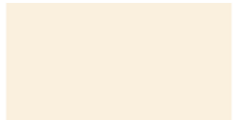
LC07 BRICK RED



LC11 TOMATO RED



LC12 SLATE GRAY



LC13 IVORY



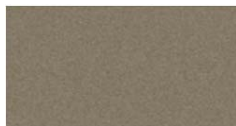
LC14 METALLIC GRAY



LC15 GRAY BEIGE



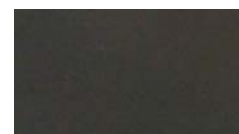
LC16 FOG GRAY



LC18 METALLIC TAUPE



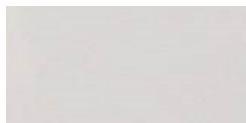
LC19 CAMOUFLAGE



LC20 GUN METAL GRAY



LC21 MUSTARD YELLOW



LC22 ASH GRAY



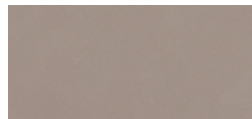
LC23 SILVER GRAY



LC26 BURGANDY



LC27 RUBY



LC28 CAPPUCCINO



LC36 PEARL



LC37 PEWTER



LC38 PALOMINO



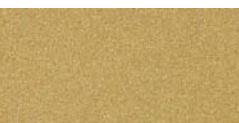
CHAMPAGNE



BRONZE



SILVER



GOLD

### Please Note:

- 1.) Custom RAL colors are acceptable, please add 10% upcharge (or minimum charge of \$260)
- 2.) Custom RAL colors need 60-120 day order delay.
- 3.) Is it the customers responsibility to send the sample of the desired color to Planum.
- 4.) Lastly all orders with custom colors will not be accepted as a return.

# ALEAL Finishes

OAK & WALNUT FINISHES (Always 5% Sheen - Matte)



CV01 Black Oak



CV09 Gray Beige Oak



CV02 Chocolate Oak



CV12 Ivory Oak



CV03 Slate Gray Oak



CV04 White Oak



CV11 Metallic Taupe Oak



CV05 Cherry Oak



CV10 Metallic Gray Oak



CV06 Natural Oak



CVL15 Opal Gray Oak



CVL14 Steel Gray Oak



CVL16 Smooth Chocolate Oak



Wild Oak



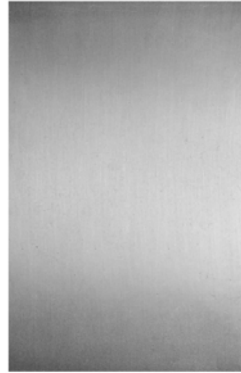
CVL17 Rustic Oak



NG01 Walnut

# ALEAL Finish

Metal Finish



POLISHED STAINLESS STEEL

## TABLE OF CONTENTS

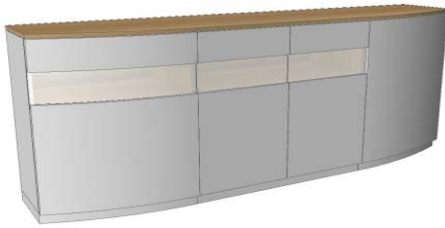
	<u>PAGE #</u>
DINING ROOM	5
VITRINE	6
PRE-DESIGNED CONFIGURATIONS	6-8
OCCASIONAL	8

# Dining

## Description

## Dimensions in Inches

Item No.	Finish	W	H	D
----------	--------	---	---	---



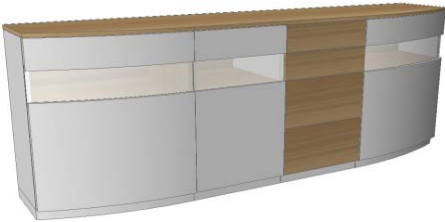
2 vol. / 0,829 m3 / 215 Kg

**AVANTGARDE PLUS Sideboard - A**  
 Polished Stainless Steel Handles  
 4x Doors  
 5x Interiors Shelves

86 5/8"      32 1/4"      18 1/8"

<b>APLUS-100</b>	Oak or Walnut Top, Plinth & Interior w/ Lacquer Fronts & Sides
------------------	--

<b>UPCHARGE</b>	LED Lights
-----------------	------------



2 vol. / 0,829 m3 / 215 Kg

**AVANTGARDE PLUS Sideboard - B**  
 Polished Stainless Steel Handles  
 3x Doors  
 4x Drawers  
 6 Interior Shelves

86 5/8"      32 1/4"      18 1/8"

<b>APLUS-101</b>	Oak or Walnut Top, Plinth, Interior & Drawers w/ Lacquer Doors & Sides
------------------	--

<b>UPCHARGE</b>	LED Lights
-----------------	------------

<b>UPCHARGE</b>	Cutlery Insert
-----------------	----------------



2 vol. / 0,660 m3 / 215 Kg

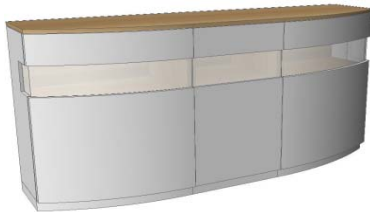
**AVANTGARDE PLUS Sideboard - C**  
 Polished Stainless Steel Handles  
 2x Doors  
 4x Drawers  
 4x Interior Shelves

68 7/8"      32 1/4"      18 1/8"

<b>APLUS-102</b>	Oak or Walnut Top, Plinth, Interior & Drawers w/ Lacquer Doors & Sides
------------------	--

<b>UPCHARGE</b>	LED Lights
-----------------	------------

<b>UPCHARGE</b>	Cutlery Insert
-----------------	----------------



2 vol. / 0,660 m3 / 215 Kg

**AVANTGARDE PLUS Sideboard - D**  
 Polished Stainless Steel Handles  
 3x Doors  
 6x Interior Shelves

68 7/8"      32 1/4"      18 1/8"

<b>APLUS-103</b>	Oak or Walnut Top, Plinth & Interior w/ Lacquer Fronts & Sides
------------------	--

<b>UPCHARGE</b>	LED Lights
-----------------	------------



2 vol. / 2,006 m3 / 220 Kg

**AVANTGARDE PLUS Oval Glass Top Dining Table**  
 5/8" Thick Tempered Glass

86 5/8"      30"      47 1/4"

<b>APLUS-104/1</b>	Oak or Walnut Base w/ Lacquer Pedestal
--------------------	--

<b>APLUS-104/2</b>	All Lacquer
--------------------	-------------

## Vitrines

### Description

### Dimensions in Inches

Item No.      Finish      W      H      D



2 vol. / 1,892 m3 / 209 kg

**AVANTGARDE PLUS Vitrine**  
 Polished Stainless Steel Handles  
 2x Doors  
 6x Interior Wood Shelves  
 4x Interior Glass Shelves

51 1/4"      61 7/8"      18 1/8"

**APLUS-112** | Oak or Walnut Top, Plinth & Interior w/ Lacquer Fronts & Sides

**UPCHARGE** | LED Lights

\*\*\* RECOMMENDED THAT UNIT BE ATTACHED TO WALL\*\*\*



2 vol. / 1,892 m3 / 209 kg

**AVANTGARDE PLUS Vitrine**  
 Polished Stainless Steel Handles  
 2x Doors  
 8x Interior Wood Shelves  
 2x Interior Glass Shelves

51 1/4"      61 7/8"      18 1/8"

**APLUS-113** | Oak or Walnut Top, Plinth & Interior w/ Lacquer Fronts & Sides

**UPCHARGE** | LED Lights

\*\*\* RECOMMENDED THAT UNIT BE ATTACHED TO WALL\*\*\*

## Pre-Designed Compositions



**AVANTGARDE PLUS Wall Unit - A**  
 Polished Stainless Steel Handles  
 2x Doors  
 8x Interior Wood Shelves  
 2x Interior Glass Shelves  
 3x Drawers

125"      61 7/8"      18 1/8"

**APLUS-106** | Combination of Oak or Walnut & Lacquer Fronts & Sides

**UPCHARGE** | LED Lights



**AVANTGARDE PLUS Wall Unit - B**  
 Polished Stainless Steel Handles  
 4x Doors  
 4x Interior Shelves

124"      65 1/4"      18 1/8"

**APLUS-107** | Combination of Oak or Walnut & Lacquer Fronts & Sides

**UPCHARGE** | LED Lights

# Pre-Designed Compositions

## Description

## Dimensions in Inches

Item No.	Finish	W	H	D
----------	--------	---	---	---



**AVANTGARDE PLUS Wall Unit - C**  
 Polished Stainless Steel Handles  
 2x Doors  
 2x Interior Glass Shelves  
 8x Interior Wood Shelves  
 3x Drawers

124"      65 1/4"      18 1/8"

<b>APLUS-108</b>	Combination of Oak or Walnut & Lacquer Fronts & Sides
------------------	---

<b>UPCHARGE</b>	LED Lights
-----------------	------------



**AVANTGARDE PLUS Wall Unit - D**  
 Polished Stainless Steel Handles  
 1x Door  
 2x Interior Glass Shelves  
 3x Interior Wood Shelves  
 3x Drawers

110 1/4"      61 7/8"      18 1/8"

<b>APLUS-109</b>	Combination of Oak or Walnut & Lacquer Fronts & Sides
------------------	---

<b>UPCHARGE</b>	LED Lights
-----------------	------------



**AVANTGARDE PLUS Wall Unit - E**  
 Polished Stainless Steel Handles  
 1x Door  
 2x Interior Glass Shelves  
 3x Interior Wood Shelves  
 3x Doors w/ 3x Interior Shelves

110 1/4"      61 7/8"      18 1/8"

<b>APLUS-110</b>	Combination of Oak or Walnut & Lacquer Fronts & Sides
------------------	---

<b>UPCHARGE</b>	LED Lights
-----------------	------------



**AVANTGARDE PLUS Wall Unit - F**  
 Polished Stainless Steel Handles  
 4x Doors  
 3x Interior Shelves

110 1/4"      22 1/2"      18 1/8"

<b>APLUS-111</b>	Combination of Oak or Walnut & Lacquer Fronts & Sides
------------------	---

<b>UPCHARGE</b>	LED Lights
-----------------	------------



**AVANTGARDE PLUS Wall Unit - G**  
 Polished Stainless Steel Handles  
 1x Door  
 2x Interior Glass Shelves  
 3x Interior Wood Shelves  
 3x Drawers

96"      61 7/8"      18 1/8"

<b>APLUS-114</b>	Combination of Oak or Walnut & Lacquer Fronts & Sides
------------------	---

<b>UPCHARGE</b>	LED Lights
-----------------	------------

## Pre-Designed Compositions

### Description

### Dimensions in Inches

Item No.	Finish	W	H	D
----------	--------	---	---	---



#### AVANTGARDE PLUS Wall Unit - H

Polished Stainless Steel Handles  
 1x Door  
 2x Interior Glass Shelves  
 3x Interior Wood Shelves  
 3x Doors w/ 3x Interior Shelves

96"

61 7/8"

18 1/8"

<b>APLUS-115</b>	Combination of Oak or Walnut & Lacquer Fronts & Sides
------------------	---

<b>UPCHARGE</b>	LED Lights
-----------------	------------

## Occasional



#### AVANTGARDE PLUS Coffee Table

5/8" Thick Tempered Glass

47 1/4"

17 3/8"

29 1/2"

<b>APLUS-105/1</b>	Oak or Walnut Base w/ Lacquer Pedestal
--------------------	--

<b>APLUS-105/2</b>	All Lacquer
--------------------	-------------

2 vol. / 0,396 m3 / 56 Kg