

BOGO COLLECTION

by ALEAL



PLANUM[®]
FURNITURE

Planum, Inc
Swedesford Corporate Center
619 B Swedesford Road
Frazer, PA 19355

Tel : 610/251-2120
Tel : 800/343-0042
Fax : 610/251-2290

email info@planumfurniture.com
visit us planumfurniture.com

ALEAL Finishes

LACQUER FINISHES



LC01 BLACK



LC02 WHITE



LC07 BRICK RED



LC11 TOMATO RED



LC12 SLATE GRAY



LC13 IVORY



LC14 METALLIC GRAY



LC15 GRAY BEIGE



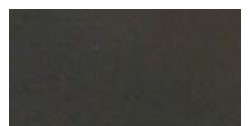
LC16 FOG GRAY



LC18 METALLIC TAUPE



LC19 CAMOUFLAGE



LC20 GUN METAL GRAY



LC21 MUSTARD YELLOW



LC22 ASH GRAY



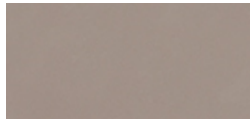
LC23 SILVER GRAY



LC26 BURGANDY



LC27 RUBY



LC28 CAPPUCCINO



LC36 PEARL



LC37 PEWTER



LC38 PALOMINO



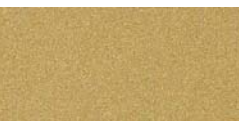
CHAMPAGNE



BRONZE



SILVER



GOLD

***CABINET INTERIORS ARE ALWAYS IN THE SAME LACQUER AS THE EXTERIOR - INTERIOR ALWAYS IN MATTE SHEEN **
OTHER COLOR OPTIONS AVAILABLE UPON REQUEST

Please Note:

- 1.) Custom RAL colors are acceptable, please add 10% upcharge (or minimum charge of \$260)
- 2.) Custom RAL colors need 60-120 day order delay.
- 3.) Is it the customers responsibility to send the sample of the desired color to Planum.
- 4.) Lastly all orders with custom colors will not be accepted as a return.

ALEAL Finishes

OAK & WALNUT FINISHES (Always 5% Sheen - Matte)



CV01 Black Oak



CV02 Chocolate Oak



CV03 Slate Gray Oak



CV11 Metallic Taupe Oak



CV10 Metallic Gray Oak



CVL15 Opal Gray Oak



CVL16 Smooth Chocolate Oak



CVL17 Rustic Oak



Gray Eucalyptus Frise (Available in HG or Matte)



Polar Eucalyptus Frise (Available in HG or Matte)



CV09 Gray Beige Oak



CV12 Ivory Oak



CV04 White Oak



CV05 Cherry Oak



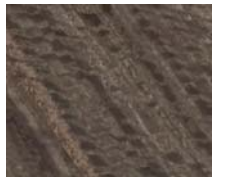
CV06 Natural Oak



CVL14 Steel Gray Oak



NG01 Walnut



Espresso Eucalyptus Frise
(Available in HG or Matte)



Wild Oak

ALEAL Finish

TABLE OF CONTENTS

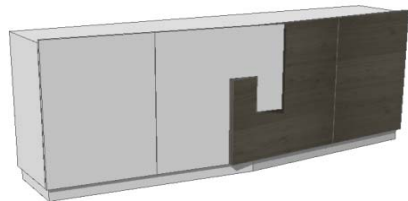
| | <u>PAGE #</u> |
|----------------|---------------|
| DINING ROOM | 5 |
| BAR UNIT | 5 |
| VITRINE | 6 |
| MEDIA CABINETS | 6 |

Dining

Description

Dimensions in Inches

Item No. Finish W H D



2 vol. / 1,187 m3 / 129 Kg

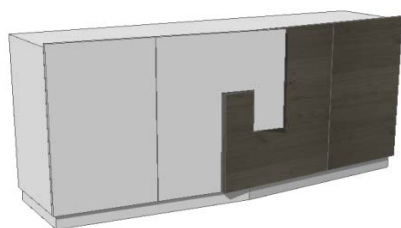
BOGO Sideboard (Big Version)

1x Drawer
Plinth is 2 3/4"H

86 5/8" 32 1/2" 21"

| | | |
|--------------------|--|--|
| BOGO-2001/1 | Walnut or Oak w/ Lacquer Structure & Front | |
| BOGO-2001/2 | Matte Eucalyptus Frise w/ Lacquer Structure & Front | |
| BOGO-2001/3 | High Gloss Eucalyptus Frise w/ Lacquer Structure & Front | |
| BOGO-2001/4 | Plank Oak w/ Lacquer Structure & Front | |

| | | |
|-----------------|----------------|--|
| UPCHARGE | Cutlery Insert | |
|-----------------|----------------|--|



2 vol. / 1,170 m3 / 110 Kg

BOGO Sideboard (Small Version)

1x Drawer
Plinth is 2 3/4"H

70 7/8" 32 1/2" 21"

| | | |
|--------------------|--|--|
| BOGO-2013/1 | Walnut or Oak w/ Lacquer Structure & Front | |
| BOGO-2013/2 | Matte Eucalyptus Frise w/ Lacquer Structure & Front | |
| BOGO-2013/3 | High Gloss Eucalyptus Frise w/ Lacquer Structure & Front | |
| BOGO-2013/4 | Plank Oak w/ Lacquer Structure & Front | |

| | | |
|-----------------|----------------|--|
| UPCHARGE | Cutlery Insert | |
|-----------------|----------------|--|



2 vol. / 0,610 m3 / 169 Kg

BOGO Rectangular Dining Table

Built-in Satin Glass Top (optional colors)

78 3/4" 30" 43 3/4"

| | | |
|--------------------|--|--|
| TOPA-2004/1 | Walnut or Wild Oak w/ Lacquer | |
| TOPA-2004/2 | Matte Eucalyptus Frise w/ Lacquer | |
| TOPA-2004/3 | High Gloss Eucalyptus Frise w/ Lacquer | |
| TOPA-2004/4 | Plank Oak w/ Lacquer | |

Bar Unit



3 vol. / 0,988 m3 / 141 Kg

BOGO Bar

w/ Mirrored Back
1x Interior Drawer
LED Projector & Glass Rack
Plinth is 2 3/4"H

47 1/4" 60 5/8" 21"

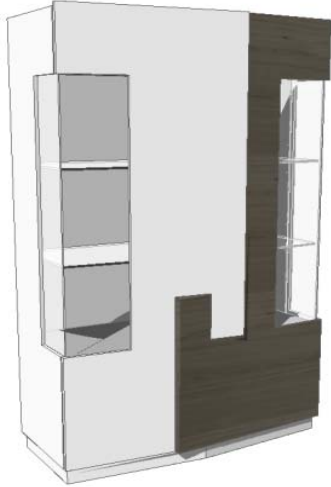
| | | |
|--------------------|--|--|
| BOGO-2003/1 | Walnut or Oak w/ Lacquer Structure & Front | |
| BOGO-2003/2 | Matte Eucalyptus Frise w/ Lacquer Structure & Front | |
| BOGO-2003/3 | High Gloss Eucalyptus Frise w/ Lacquer Structure & Front | |
| BOGO-2003/4 | Plank Oak w/ Lacquer Structure & Front | |

| | | |
|-----------------|---------------|--|
| UPCHARGE | LED Projector | |
|-----------------|---------------|--|

| | | |
|-----------------|------------|--|
| UPCHARGE | Glass Rack | |
|-----------------|------------|--|

*** RECOMMENDED THAT UNIT BE ATTACHED TO WALL ***

Vitrine



2 vol. / 1,410 m3 / 158 Kg

Description

Item No. Finish

Dimensions in Inches

W H D

BOGO Vitrine
w/ Mirrored Back
4x Interior Shelves
Plinth is 2 3/4"H

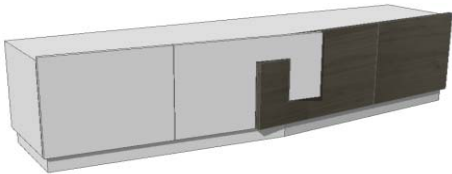
47 1/4" 75 1/4" 21"

| | | |
|--------------------|--|--|
| BOGO-2014/1 | Walnut or Oak w/ Lacquer Structure & Front | |
| BOGO-2014/2 | Matte Eucalyptus Frise w/ Lacquer Structure & Front | |
| BOGO-2014/3 | High Gloss Eucalyptus Frise w/ Lacquer Structure & Front | |
| BOGO-2014/4 | Plank Oak w/ Lacquer Structure & Front | |

| | | |
|-----------------|------------------|--|
| UPCHARGE | 2x LED Projector | |
|-----------------|------------------|--|

*** RECOMMENDED THAT UNIT BE ATTACHED TO WALL***

Media Cabinet



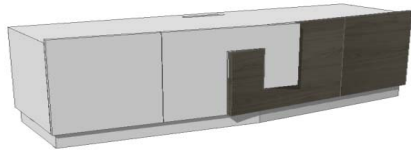
1 vol. / 0,599 m3 / 102 Kg

BOGO Media Cabinet (Big Version)

1x Drawer
Plinth is 2 3/4"H

78 3/4" 22" 21"

| | | |
|--------------------|--|--|
| BOGO-2002/1 | Walnut or Oak w/ Lacquer Structure & Front | |
| BOGO-2002/2 | Matte Eucalyptus Frise w/ Lacquer Structure & Front | |
| BOGO-2002/3 | High Gloss Eucalyptus Frise w/ Lacquer Structure & Front | |
| BOGO-2002/4 | Plank Oak w/ Lacquer Structure & Front | |



1 vol. / 0,599 m3 / 102 Kg

BOGO Media Cabinet (Small Version)

1x Drawer
Plinth is 2 3/4"H

63" 22" 21"

| | | |
|--------------------|--|--|
| BOGO-2015/1 | Walnut or Oak w/ Lacquer Structure & Front | |
| BOGO-2015/2 | Matte Eucalyptus Frise w/ Lacquer Structure & Front | |
| BOGO-2015/3 | High Gloss Eucalyptus Frise w/ Lacquer Structure & Front | |
| BOGO-2015/4 | Plank Oak w/ Lacquer Structure & Front | |



BOGO Shelf

63" 22" 21"

| | | |
|--------------------|--|--|
| BOGO-2016/1 | Walnut or Oak w/ Lacquer Structure & Front | |
| BOGO-2016/2 | Matte Eucalyptus Frise | |
| BOGO-2016/3 | High Gloss Eucalyptus Frise | |
| BOGO-2016/4 | Plank Oak | |