



Please also note our general details and sales information

Edition 29.08.2024

Errors and amendments excepted. Our General Terms and Conditions are effective. / WEEE-Reg.-No. DE 69718127

TABLE TOP VERSION

Table top in the versions:

- **Solid wood divided in the middle** (code „8“)

- **Solid wood dull edge divided in the middle** (code „9“)



- **Ceramic** (code „4“)



- **HPL** (code „6“)



Depending on the chosen table top the stated total height can vary up to 15 mm.

SOLID WOODEN HOLDER

Solid wooden holder with version „8“ and „9“ on the lines of the table top.

With version „4“ and „6“ the solid wooden holder is optionally available in:

- beech
- wild oak natural
- wild oak bianco

BASE FRAME

Metal frame optionally available in:

- powder-coated structural black mat
- nickel satined (stainless steel optics) against extra charge see price sheet

TABLE TOP

SOLID WOOD

Only the high-quality trunks and therefore the smallest part of the total felling can be used for the furniture construction. That applies to the use of the trunk for solid wood production, too. The choice of wood is done selectively according to the requests typical for furniture.

Wood is an agile material and reacts to the room climate, i.e. it absorbs dampness of the air and dispenses it again. As a basic principle wood has the characteristic to act naturally (to expand/ decrease). The technical processing shows natural characteristics; dimensional tolerances are possible. These characteristics constitute no grounds of complaint.

The solid table top as well as the wooden holder at the frame is optionally available in:

- **Beech (UV laminated oil effect):** With older trees a reddening of the wood inside the trunk arises as a natural corollary, named core. This core is characterized by a beautiful, bright colouring and unique growth marks.



- **Wild oak natural and wild oak bianco (UV laminated oil effect):** Visual characteristics of wild oak are increased arising branches, small cracks, whirls or face sides. The agility of the wood is also formed by the natural play of colours.





Please also note our general details and sales information

Edition 29.08.2024

Errors and amendments excepted. Our General Terms and Conditions are effective.

ONLY WITH SOLID WOOD (Code „8“)

- **Beam oak (UV laminated oil effect):** Beam oak is no special kind of oak, but the name should make clear that it is a matter of specific sort of oak. Solely oak trunks that have grown in special areas and possesses as much as possible branches will be used. Different congeries of branches and knotholes in different sizes are typical characteristics. Reworked respectively ground wind shocks and nicks as well as cross cracks in branches, grain wood cracks or growth cracks render a wide colour spectrum and are typical for beam oak.



CERAMIC

The main component of the ceramic top is the basic material clay that is fired together with different mineral raw materials.

Ceramic offers a lot of advantages for the intensive use. Its surface is hygienic and also easy to care and to clean. The table top does not only look elegant it's also resistant, resilient and light resistant.

The ceramic table top is optionally available in:

- **anthracite**



- **cement optics**



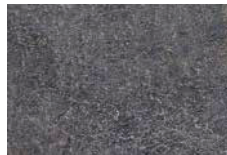
HPL

The code HPL (High Pressure Laminate) is standing for flat laminates that are grouted in a special high-pressure method. HPL boards consist mainly of paper that is drenched in special resins. As completion melamine resin makes for a robust and beautiful surface.

The HPL board does not only look elegant it's also resistant, easy-care and light resistant.

The HPL table top is optionally available in:

- **anthracite**



- **cement optics**



CARE INSTRUCTIONS

Never use abrasives, polishes or cleaning agents for care respectively for cleaning. Also do not apply acid or base containing chemicals. Just wipe off damply with a soft clean cloth and dry afterwards.

ORDER CHECK LIST

Please pay attention to the following issues respectively to complete specifications when ordering:

- **article / table size**
- **finish of table top** (with version „8“ and „9“ the solid wooden holder will be delivered analogue)
- **finish of solid wooden holder** with version „4“ and „6“
- **finish of metal frame**



Errors and amendments excepted. Our General Terms and Conditions are effective.

I RECTANGULAR SOLID

I RECTANGULAR DULL EDGE SOLID

	Table fixed solid	Table fixed solid	Table fixed solid	Table fixed solid dull edge	Table fixed solid dull edge	Table fixed solid dull edge
H	76	76	76	76	76	76
	8K	8I	8F	9K	9I	9F
W	D 100 220	D 100 200	D 90 180	D 100 220	D 100 200	D 90 180

Beech

Wild oak natural

Wild oak bianco

Beam oak

Extra charge for base frame in nickel satined:



RETAIL

11.2024 PRICING

Edition 29.08.2024

Errors and amendments excepted. Our General Terms and Conditions are effective.

I RECTANGULAR CERAMIC W. WOODEN HOLDER

I RECTANGULAR HPL W. WOODEN HOLDER

	Table fixed ceramic	Table fixed ceramic	Table fixed ceramic	Table fixed HPL	Table fixed HPL
H	76	76	76	76	76
	4K	4I	4F	6H	6F
D	100	100	90	90	90
W	220	200	180	200	180

Beech

Wild oak natural

Wild oak bianco

Extra charge for base frame in nickel satined: